
Welcome



We're delighted to have you with us in membership - here's what you can expect!

Whether you're a brand new member or are staying with us for another year, we are so pleased that you are supporting the Society.

This pack outlines all the information you'll need to know about being a member, from what we can help you with as you continue your journey through the world of garden and landscape design to information about the Society itself and how you can get involved to make the most out of your membership.

The Society is run by its members, for its members and as such every single member is a crucial part of a much bigger whole - we could not do what we do without your ongoing support and input.

We hope you enjoy your time with us! If you have any questions about your membership or the Society please do reach out to us - the admin team is here to help with all aspects of membership.

Best wishes,

*The SGLD
admin team*

In this pack:

About the Society

The Pathway to
Registered
Membership

Membership
benefits

Where to find
membership
information

What we expect
from you

The accreditation
process

SOCIETY OF GARDEN + LANDSCAPE DESIGNERS

About Us

Established in 1981, we are the only professional body in the UK for garden and landscape designers. We champion excellence in design, and support our members to train, work, develop and maintain the highest standards.

Our mission is simple - to inspire garden and landscape design that enriches homes, places and lives.

We are governed by our Articles of Association - you can read this by clicking below.

**Articles of
Association**

All of our members are expected to abide by our Code of Conduct

**Click here to read the
Code**

It is important that all members follow this code to uphold the reputation of the Society and its members.

You may state your level of membership on your website/social media, i.e. "I am a Pre-registered member of the SGLD".

Please note that use of the Society logo is limited to **Registered Members and Fellows only.**



Our Values

We stand for **excellence** in sustainable garden and landscape design, championing continuous improvement in professional standards, providing the expert voice in our field and collaborating with industry partners to achieve change.

We believe in our **community**, in supporting and nurturing our members to achieve their best, and in creating opportunities to learn and build a career in garden and landscape design that are open to all.

We believe in the **creativity** that flows from a diverse and inclusive community, and its endless capacity to meet new challenges, drive innovation and influence thinking.

We believe in **transparency**, in being fully open and democratic in our decision-making, and in preserving the independence and integrity that inspire trust in our services and campaigns.

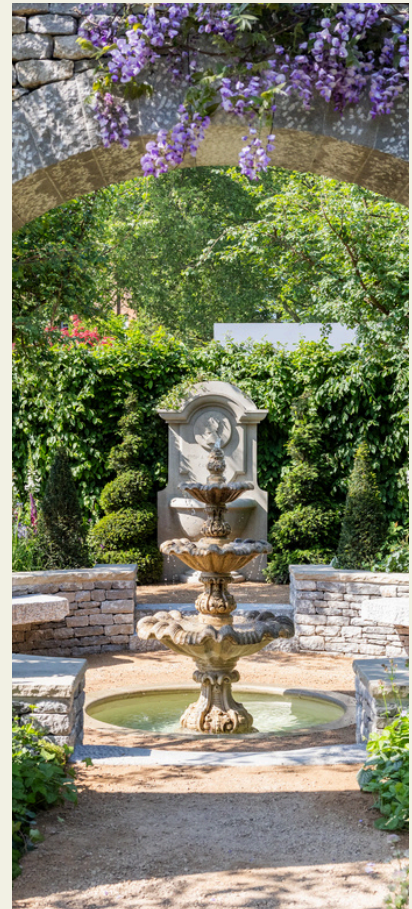
How the Society Works

By the members, for the members

The overall strategy and direction of the Society is overseen by our voluntary council, consisting of 10 members of Pre-registered or Registered status plus a number of additional volunteers reporting on various Society activities.

[View the list of volunteers here](#)

The council are supported in the day-to-day running of the Society by the administration and PR teams.



What we do

Keeping all of our members' interests at heart, we work to promote and represent excellence in design through a number of initiatives.

From promoting our members to the public at industry shows around the country to increasing broader awareness of what makes for great garden and landscape design, we aim to showcase the very best in design practices.

We highlight our members through regular updates in the Garden Design Journal - the UK's only publication dedicated to garden design - as well as on our social media channels.

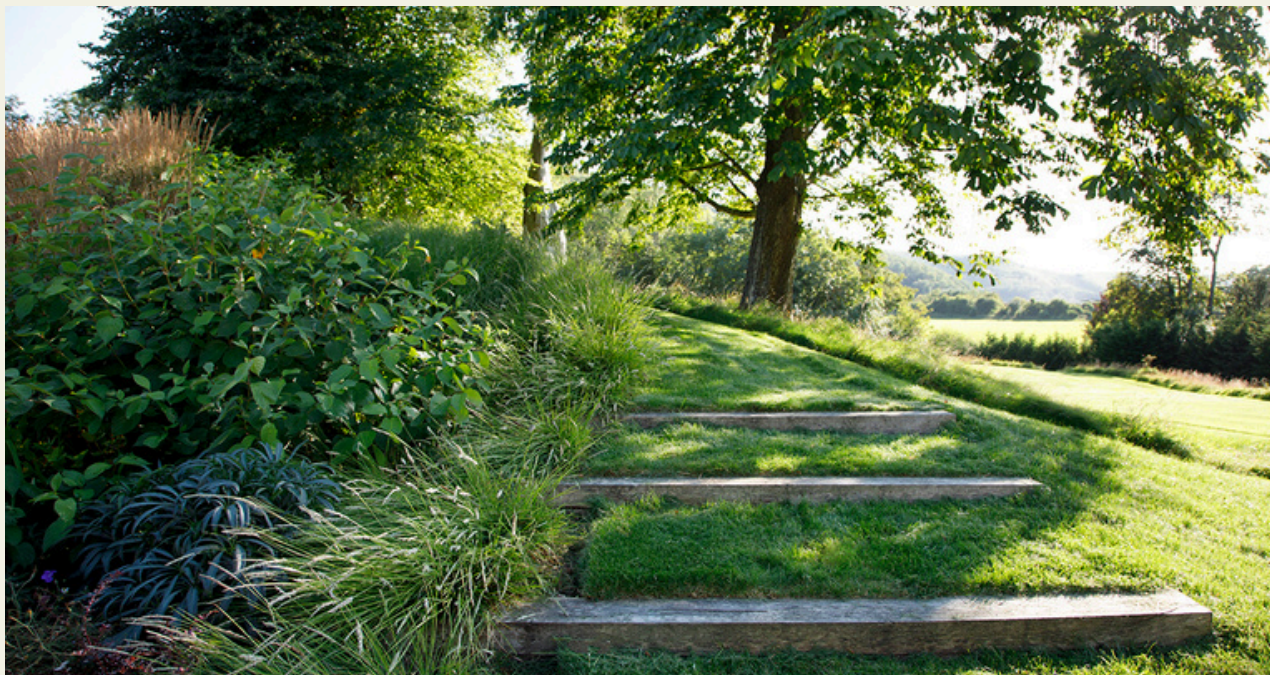
To help you continue to learn and develop, we run a wide variety of events throughout the year aimed at keeping your design skills sharp.

In addition to promoting our membership, we also aim to be thought leaders, keeping not only our membership but the wider public informed as to how to keep their gardens sustainable.

We are always working to make knowledge widely available on what is and is not sustainable practice.

Examples of this include our "Say No" campaign urging people not to use artificial plants or turf in their gardens, and our series of Bitesize sustainability webinars keeping you up to date.

Our Sustainability working group of volunteers keep the information flowing, so keep your eyes open for the next initiative and maybe you can get involved!



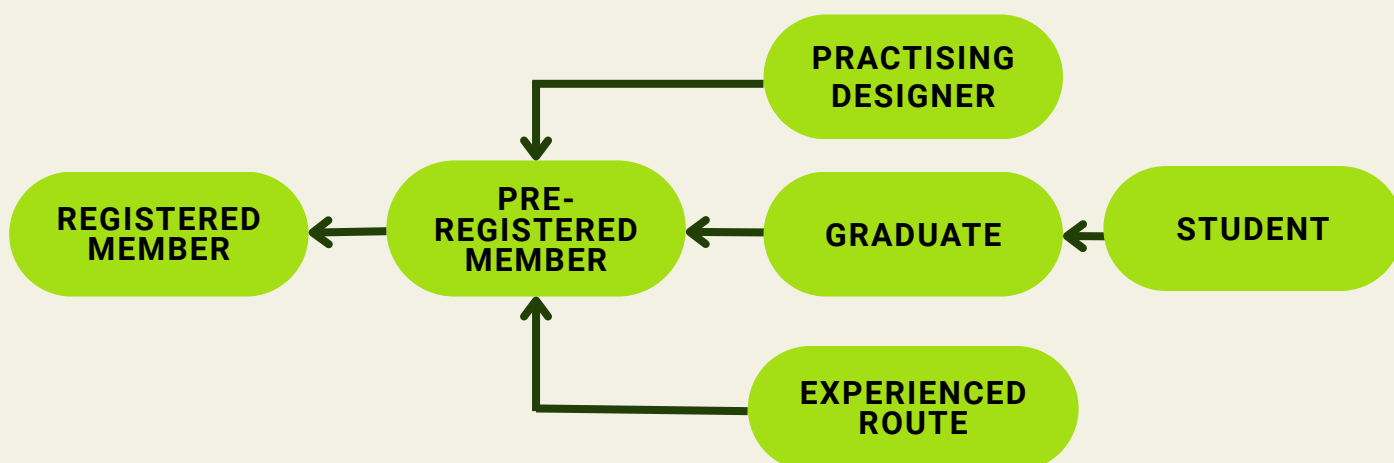
Registered Membership: The Pathway to Follow

Individual designers who have passed our accreditation process are awarded the status of Registered Member and are listed in our online directory. They are allowed to use the letters MSGLD (Member of the Society of Garden and Landscape Designers) after their name. Those Registered Members who have been recognised for making an exceptional contribution to our association and the garden design profession are awarded Fellowship and may use FSGLD (Fellow of the Society of Garden and Landscape Designers).

Registered Membership is an endorsement of an individual's design work and offers an assurance of quality to potential clients.

The process of working your way to Registered Membership is called the Pathway, and there are several entry points - please see the chart below for more information.

We would encourage all designers to follow the Pathway and work towards accreditation.



Membership Benefits: Student Members



Our busy network of local volunteers are always planning new events and meetups for networking. Choose your three cluster groups and get to know other designers near you.

Enjoy preferential ticket prices to any event hosted by us - this ranges from regular CPD training events (both online and in person) to larger-scale events such as our annual Awards ceremony and regular Conference or Symposium.

Enter the prestigious SGLD Student Awards and get the chance to showcase your work at our annual ceremony - the highlight of the garden and landscape design calendar.

Access our wide range of useful documents, including templates, guidelines and helpful information on how to design sustainably.



Read the GDJ

The only UK magazine dedicated entirely to garden design, in an easy to read on-the-go digital format. Hard copy subscriptions can be purchased separately.



Enter the Awards

Find out about how you can enter, see past winners and check all the key dates.



See what's on

Our calendar of useful training events and regional visits is updated regularly - you'll be kept informed through our bi-weekly CPD newsletter email and the bi-monthly member newsletter.

Your Benefits: Friends of the Society



While Friends of the Society are not members, you can still enjoy a range of benefits for your support of what we do.

Our busy network of local volunteers are always planning new events and meetups for networking. Choose your three cluster groups and get to know other designers near you.

Enjoy preferential ticket prices to any event hosted by us - this ranges from regular CPD training events (both online and in person) to larger-scale events such as our annual Awards ceremony and regular Conference or Symposium.

Access our wide range of useful documents, including templates, guidelines and helpful information on how to design sustainably.

Read the GDJ

The only UK magazine dedicated entirely to garden design, in an easy to read on-the-go digital format. Hard copy subscriptions can be purchased separately.

See what's on

Our calendar of useful training events and regional visits is updated regularly - you'll be kept informed through our bi-weekly CPD newsletter email and the bi-monthly membership newsletter.



Membership Benefits: Pre-registered members

Priority booking for Core CPD events, designed to help you through the accreditation process.

Our busy network of local volunteers are always planning new events and meetups for networking. Choose your three cluster groups and get to know other designers near you.

Enjoy preferential ticket prices to any event hosted by us - this ranges from regular CPD training events (both online and in person) to larger-scale events such as our annual Awards ceremony and regular Conference or Symposium.

Enter the prestigious SGLD Awards and get the chance to showcase your work at our annual ceremony - the highlight of the garden and landscape design calendar.

Access our wide range of useful documents, including templates, guidelines and helpful information on how to design sustainably.

Join the annual Business Mentoring scheme to learn vital skills to grow your business.



Read the GDJ

The only UK magazine dedicated entirely to garden design, in an easy to read on-the-go digital format. Hard copy subscriptions can be purchased separately.



Enter the Awards

Find out about how you can enter, see past winners and check all the key dates.



See what's on

Our calendar of useful training events and regional visits is updated regularly - you'll be kept informed through our bi-weekly CPD newsletter email.

Pathway Support for Pre-registered members



Step 1: Registration Starts Here

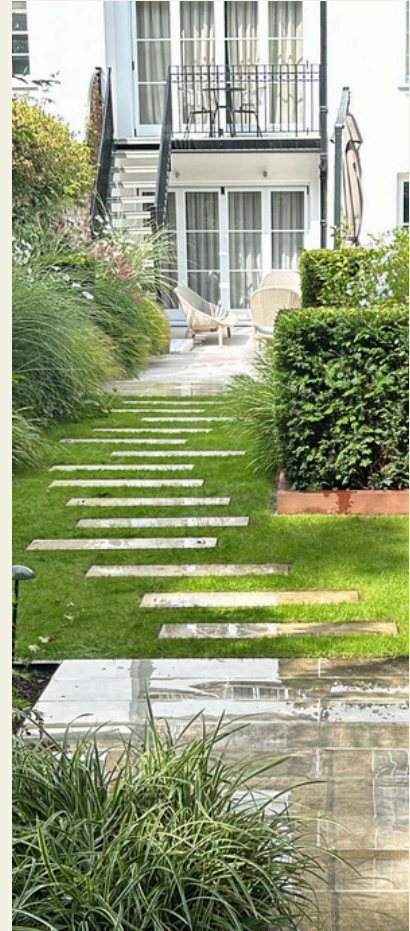
The first step on the Pathway is a presentation that gives you information on what is required for an accreditation submission, and what you will need to prepare.

[Download here](#)

Step 2: Accreditation Advice Sessions

We hold regular, advisory only, design workshops where you can get a brief overview of the quality of your work and tips on how to develop it to accreditation standard.

Contact the admin team on info@sgld.org.uk to find out more and book your place.



Step 3: Submitting a Project

Accreditation is a qualifying assessment - our way of evaluating your work and professional competence. It involves submitting your work to a panel of three highly qualified Registered Members and Fellows, members of the accreditation committee who have been fully trained in the assessment process who assess and decide whether it is up to the required standard. Contact the admin team to get your project booked in.

Experienced Route: A Branch on the Pathway

Aimed at established garden designers with a minimum of 8 years practicing garden design, either as a business owner or part of a practice, the Experienced Route follows a different application process and requires one complete project following a successful application.

This route is also open to Chartered Members of the Landscape Institute (CMLI).

[Find out more](#)

Membership Benefits: Registered Members

In addition to the benefits of Pre-registered membership, Registered Members and Fellows have access to the benefits below.



Your own profile on our website which you can customise with photos and information about your business - members of the public will be able to find you and contact you directly, or visit your website and social media pages to see more.

Promotion of your achievements as part of our PR efforts - get in touch with us to let us know of any awards you have won or similar news.

Inclusion in the mailing list for press requests, competitions and enquiries both commercial and residential.

Use of the exclusive Registered Member/Fellow logo and the suffix MSGLD/FSGLD, as well as Society-branded site boards via our colleagues at Cennox.

Getting Involved

Priority is given to Registered Members and Fellows when we look for volunteers at shows and events such as RHS Chelsea Flower show. This can range from manning the Society stand to meet the public or sharing your expert knowledge with attendees and potential clients.

Registered Members and Fellows can also vote on proposals at Annual General Meetings, as well as put forward proposals and nominations for the SGLD Council.



Useful Information and where to find it



Helpful Resources

A wealth of helpful tips and templates, from a Terms of Engagement document to guidance notes on sustainable design, can be found on our website in the Resources section.

You can also find documents relating to membership, such as proxy voting forms, AGM proposals and minutes as well as a handy guide for using the website.

The documents can be filtered by type to find what you're looking for quickly.

[Browse Resources](#)

Membership & Subscription

Your membership number and all of the information about your membership can be found on the Edit Profile page of your My SGLD, found by clicking your initials in the top right of the screen once logged in.

Your next renewal date is found on your My Subscription page. This is also where you can change how you make your payments, see what you pay per year and when your next annual payment is due to be.

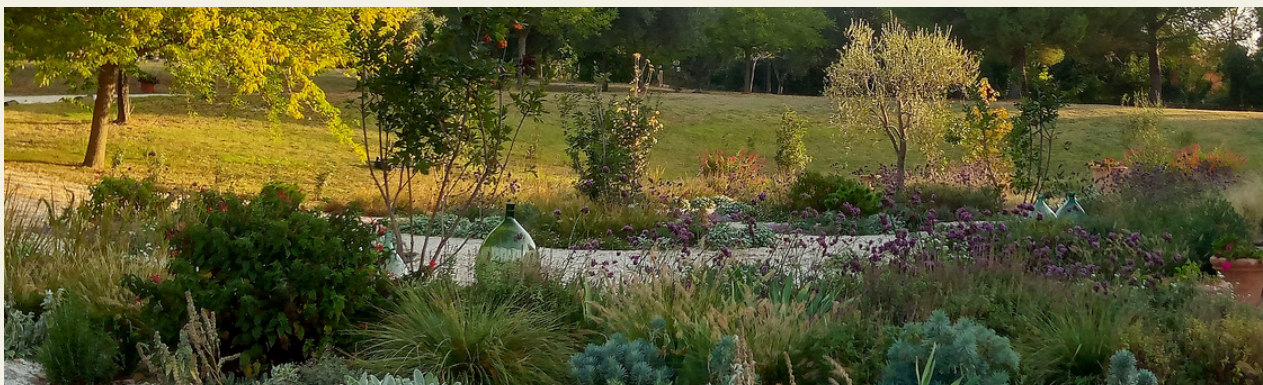
[My SGLD](#)

Regional Networking

Get to know other designers near you by joining your local cluster groups. You can join up to three groups, chosen on your profile, at any given time. So long as your GDPR permissions are set to allow for regional communications, you will be added to the mailing lists and be contacted by our regional volunteers regarding meetups in the area.

A list of our regional volunteers and how to contact them is visible to members only on our website.

[See the List](#)



How to get involved

Our volunteer council and committees are always busy and looking for people to get involved. Taking a more active role can lead to networking opportunities, a higher profile in the industry, as well as having a direct hand in steering the Society into the future.

Registered Members, Fellows and Pre-registered members are all eligible to join our Council, and we would welcome all levels of membership to join our sub-committees.

If you have a skillset that you think would be helpful, why not consider some of the below:

- Garden Design Journal Editorial Committee
- Symposium/Conference Committee
- Accreditation Committee
(open to Registered Members and Fellows only)
- Sustainability Working Group
- CPD Working Group



Regions

If you're looking for something a little more local, why not consider taking on a regional volunteer role?

Our cluster groups spread through the regions are one of our greatest assets, helping designers get together. Whether it's meetups at a local garden, talks from one of our Affiliates or just a casual get-together in a local venue, there's so much variety in the role of Cluster Group Leader.

If you're up for a bigger challenge, why not look at becoming a Regional Co-ordinator?

You can find out more about becoming a regional volunteer [on our website here](#) - please note you must be logged in and your membership must be activated to view this page.

If you have any questions about other roles or just want to talk about your options, please do get in touch with the admin office - we can help find the perfect place for your skills to shine!

Communications from us



You can change which communication you would like to receive from us at any time by amending your GDPR permissions in your profile.

There are four categories which you can opt in or out of independently:

SGLD News

For receiving our bi-monthly member newsletter and updates on the Society as a whole.

SGLD Events

Allows for receipt of information about events put on by us and events we are attending, including volunteer opportunities.

Non-SGLD Events

For news about events held by outside organisations you may be interested in.

Regional Communications

To allow our regional volunteers to contact you about events and meetups in your area.

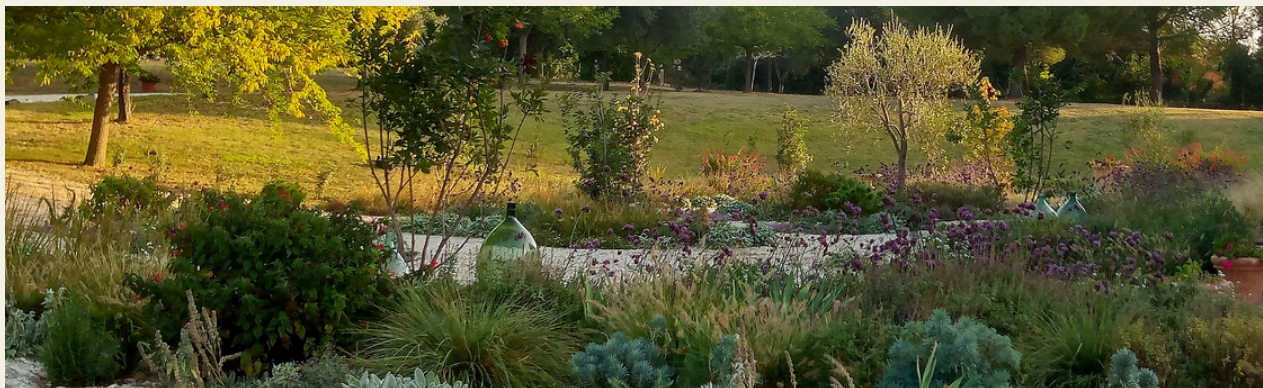


Emails regarding your membership come to you regardless of these settings - these include such things as invoices, renewal notifications and alerts to membership benefits or changes.

Marketing emails from us are only sent if your GDPR permission is set to 'yes' for the relevant category. However please note that should you use the inbuilt function to unsubscribe from any email we send this will result in you receiving nothing at all except your membership information.

If you wish to resubscribe at any point all you need to do is contact the admin team and we will send you an email asking you to consent to emails from us once more.

**Read our Privacy
Policy for more info**

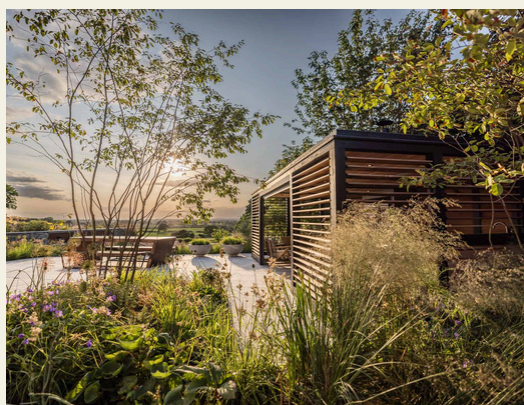


What is Continuing Professional Development?

Any professional's career is built on a foundation of learning - CPD is the ongoing process of improving those skills to stay up to date with design standards. It is a personal, individual development process that allows you to manage your own development in your chosen field and always be gaining new knowledge and experience.

We run a variety of CPD events which are open to anyone looking to further their design skills, be that learning how to create a planting plan, selecting the right plants for a garden or how to photograph your finished designs.

Registered and Pre-registered Society members are expected to undertake 25 hours of CPD during each membership year.



Why do I need CPD?

For many professions, it is a mandatory requirement to show evidence of CPD each year in order to renew professional-body membership or chartership.

For us, it is a sign that every member takes their ongoing training seriously and has refreshed their knowledge to keep pace in our ever-evolving industry.

No matter where you are in your career, there are always new things to discover and new standards to maintain.



What Counts as CPD?

The below are just a sample of what could count towards your CPD hours.

- Taking part in a structured learning course, such as the workshops hosted by us
- Attending your local cluster group meetings
- Garden visits
- Research such as reading books or journals
- Visiting an industry show
- Touring a nursery or other supplier showroom